

Classifying the Vocal Range of the Early Adolescent Male

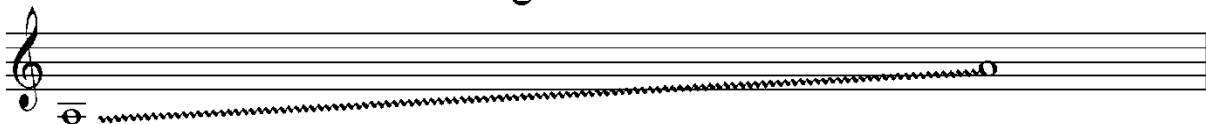
Alan C. McClung Ph.D.

Cambiata Institute of America for Earsly Adolescent Vocal Music, director

Early Adolescent Male Treble

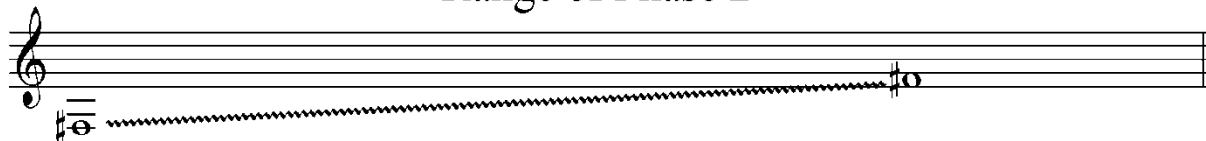
This classification typically includes most 6th grader males, some 7th grader males, and a few 8th grader males

Cambiata I Range of Phase A



This classification typically includes some 6th grader males, most 7th grader males, and a few 8th grade males.

Cambiata I Range of Phase B



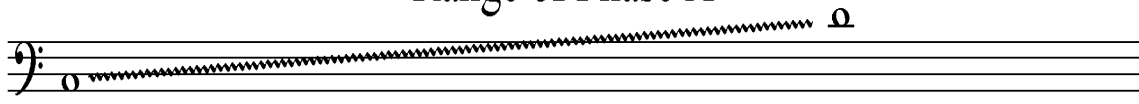
This classification typically includes a few 6th grade males, some 7th grader males, and a large percentage of 8th grade males.

Cambiata II



This classification typically includes an occasional 6th grade male, a few 7th grade males, and a greater percentage of 8th grade males.

Baritone Range of Phase A



This classification typically includes an occasional 6th grade male, a few 7th grade males, and a greater percentage of 8th grade males.

Baritone Range of Phase B

